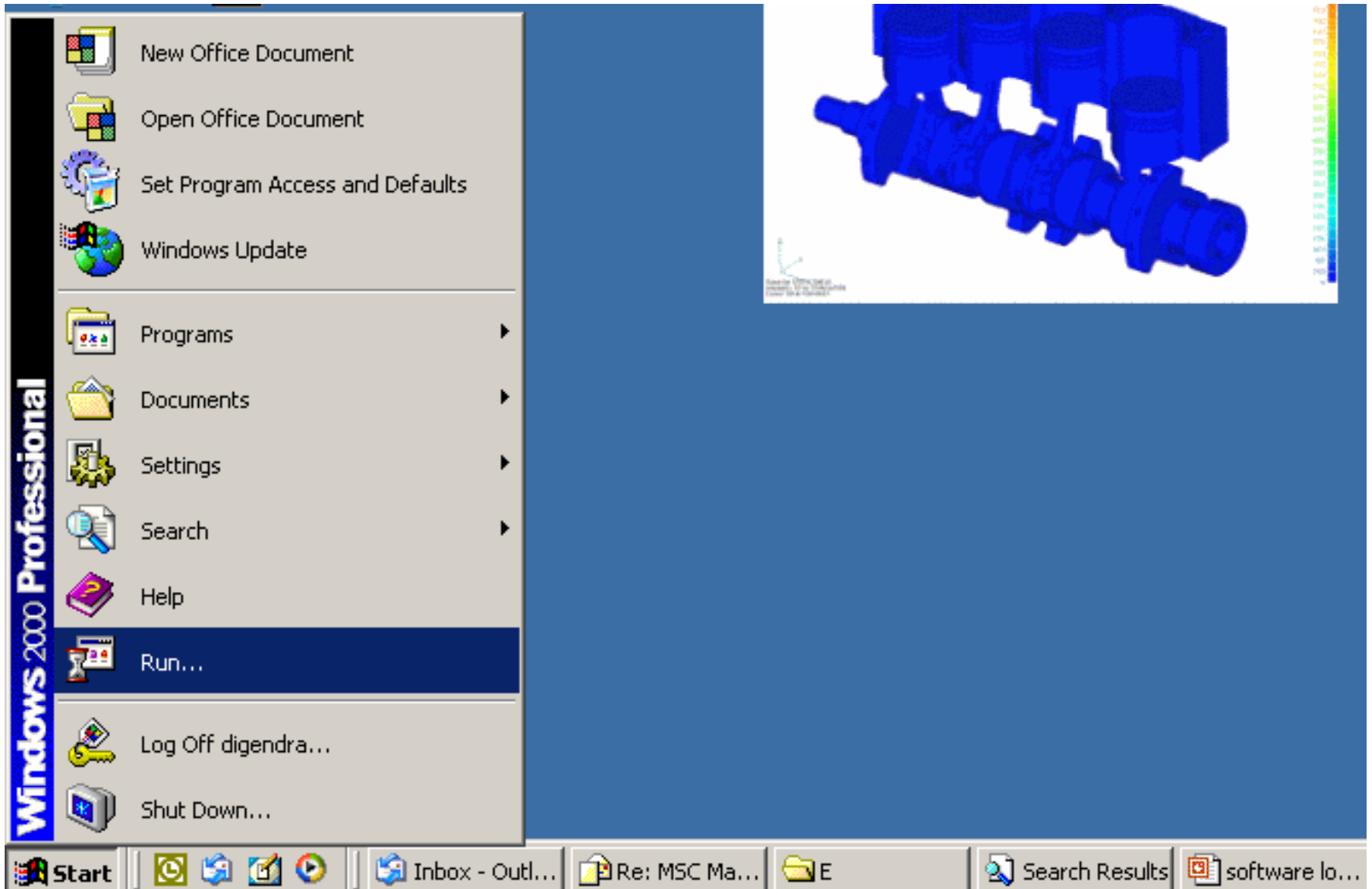
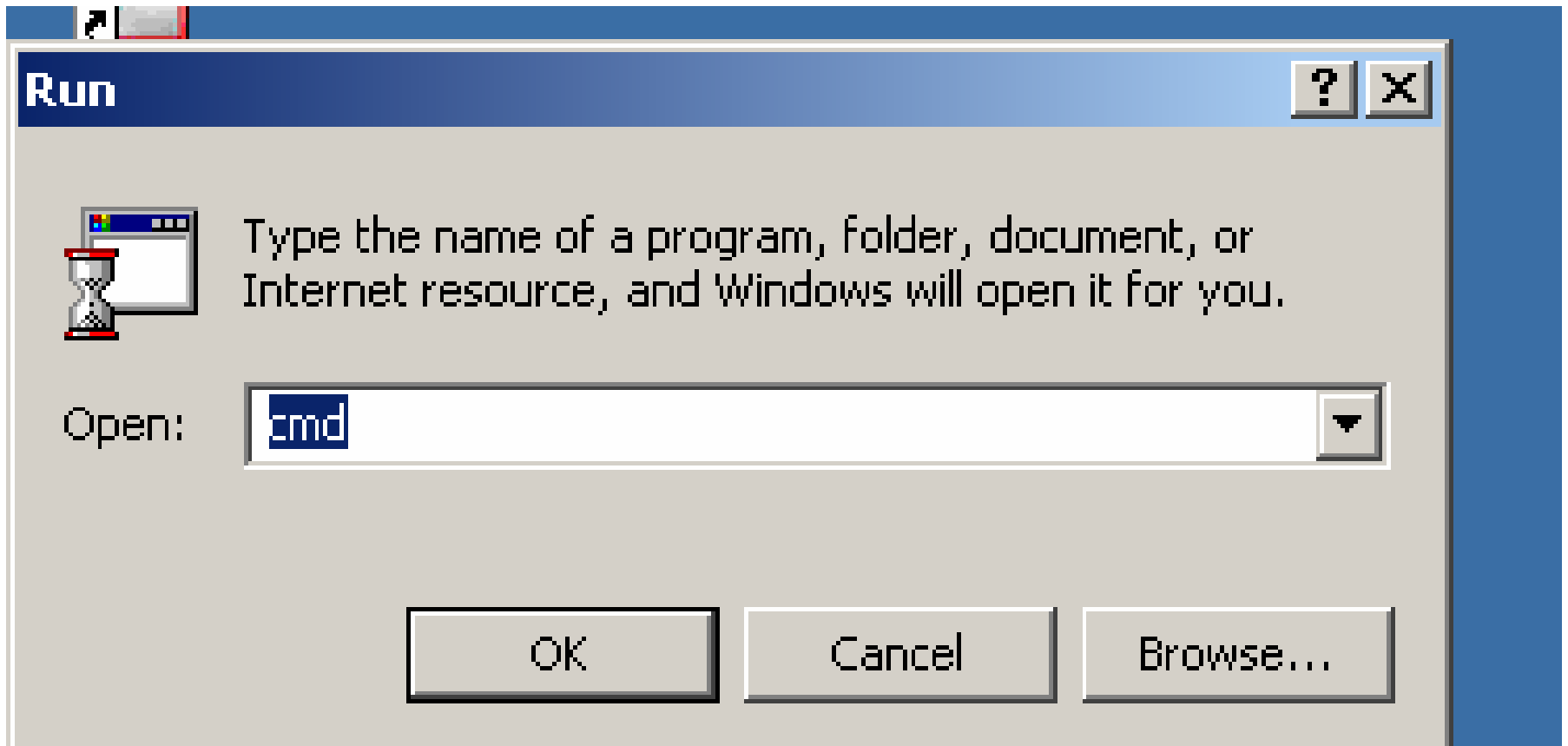


Go to **Start** & Select **Run**



Type **cmd** then press enter



Type **ipconfig/all** on DOS prompt then enter

Take a print screen snap of the outcome as shown below & send for license generation

```
C:\WINNT\system32\cmd.exe
C:\WINNT\system32>ipconfig/all
Windows 2000 IP Configuration

    Host Name . . . . . : DIGENDRA-234
    Primary DNS Suffix . . . . . :
    Node Type . . . . . : Broadcast
    IP Routing Enabled. . . . . : No
    WINS Proxy Enabled. . . . . : No

Ethernet adapter Local Area Connection 2:

    Connection-specific DNS Suffix  :
    Description . . . . . : D-Link DGE-530T Gigabit Ethernet Adapter
    Physical Address. . . . . : 00-11-95-F6-69-D1
    DHCP Enabled. . . . . : No
    IP Address. . . . . : 192.168.0.78
    Subnet Mask . . . . . : 255.255.255.0
    Default Gateway . . . . . : 192.168.0.1
    DNS Servers . . . . . : 202.56.215.6
                          202.56.230.6

Ethernet adapter Local Area Connection:

    Media State . . . . . : Cable Disconnected
    Description . . . . . : Realtek RTL8139(A)-based PCI Fast Ethernet Adapter
    Physical Address. . . . . : 00-0C-76-CD-55-BC
```